

APRIL 2021

THE *Splash!* NEWSLETTER

Society of Watercolor Artists Monthly Newsletter



From the President...

By Darla Bostick

Hi to all our SWA members and friends!

April is always an exciting month for us as we prepare to present our International Exhibition. This year we set new records as we attracted more entries than previous exhibits. Representing art from far away, we had artists from Malaysia, Russia, Mexico, Spain, 9 regions of China, Canada - Newfoundland and Quebec, Peru, India, Italy send art images. We also welcome several new international members! Perhaps the virtual aspect of art exhibitions does have some perks. Without the requirements and costs of framing, shipping, deliveries and pick ups it is easier (and costs less) to participate. However, I hope our fall Membership Exhibition will be one we can view in person. As I write this, we are waiting to hear from our juror, Andy Evansen on the selections to be included.

Andy's workshop has plenty of participants and we are anxious to see his demo on the 19th provided by the zoom format. Be sure to log on early to prevent hiccups signing in.

We are working on a summer in-person workshop to replace the one postponed last year. Be watching for details on that as I'm sure it will fill quickly.

In the meantime our Asel Art of the Month competition has provided us with a glimpse of what we are painting at home. Our partnership with Asel allows us to continue this program through the year.

I want to recognize our new editor for the newsletter. Jan Riggins is a new member and has jumped right in as a volunteer. It is said it takes a village to raise a child. The same goes for volunteer organizations. Many hands make light work. We need your help now. Although we are not meeting as a group, the business of SWA continues with the caring dedication of its volunteers. I am asking you to consider doing your part. Most of your officers took on an additional year of service due to the pandemic. Now we have two very important positions that need filling. This will be the last exhibition with Charlie Nieman as chair and Pat Banell, who has dutifully served as treasurer for many years, must retire that position. These need to be filled right away. Let any of our Board members know if you are interested.

Let's continue to make SWA the best!

Darla Bostick, President



IN THIS ISSUE

APRIL MEETING
ZOOM DEMO ANDY EVANSEN

APRIL WORKSHOP
ANDY EVANSEN

SWA ANNOUNCEMENTS

PAINTING OF THE MONTH:
MARCH WINNERS

CALENDAR

MEMBER UPDATE

INFORMATION STATION



Andy Evansen
April 19th Demo and
Online Workshop

Bold & Colorful

"My workshop will focus on using value studies from the outset to identify the large shapes in a scene. These large shapes provide the artist with opportunities for lost edges when painting in watercolor, which is essential if we are to take full advantage of the medium."

[Register Today](#)



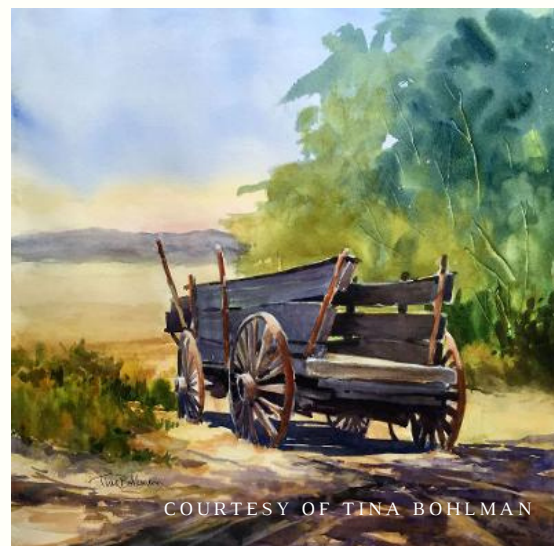
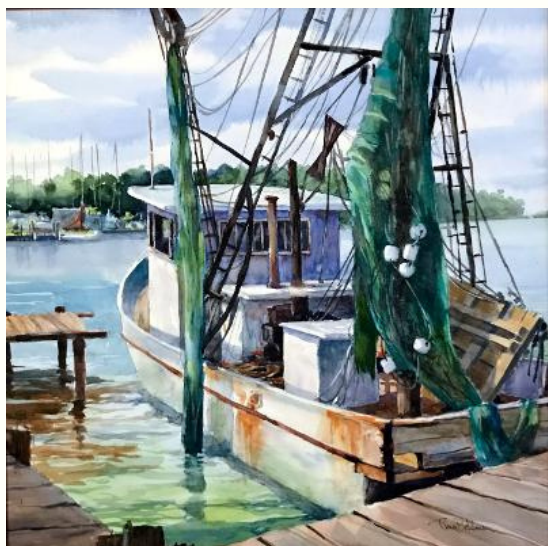
Online Workshop

ONLY 3 SPOTS AVAILABLE

Andy Evansen will instruct you in how to create those BOLD and Colorful watercolor paintings that make a statement. He teaches you how to capture the landscape with economy of brushstroke, taking advantage of the luminosity of watercolors done in just a few washes. In addition, he will show you how to capture everyday scenes in such a way that revealed a hidden beauty, subjects that many would simply pass by.

APRIL 20 - 22, 2021

Upcoming Demo Artists



April 19th: Andy Evansen

May 17th: Tina Bohlman



Tina is a self taught artist, painting in watercolor and oil. She is a plein air painter and draws inspiration from her home state of Texas. She has been painting professionally for 40 years. She has studied under artists such as Jan Kuntz and our current workshop artist Andy Evansen. She gives workshops and offers private lessons. She is a member of many organizations such as Outdoor Painters Society, Women Artists of the West, International Plein

Air Painters just to name a few. Most recent recognitions include 1st Place in the 2019 Paint Historic Waxahachie, 2019 Award of Excellence-Women of the West and Award of Merit 2019 Plein Air Southwest Galveston. She is also represented by Art on the Square Gallery in Waxahachie, Dutch Art Gallery in Dallas, Rivers Edge Gallery in Kerrville and Sandcastle winery Bucks County PA.

MESSAGE FROM THE DEMO AND WORKSHOP CHAIR

Hope everyone is wetting those brushes and has completed their entries for the 2021 International Exhibition. Andy Evansen is our juror and demo artist this month. Both will be virtual so get ready for a great learning experience. I wanted to personally thank Laurin McCracken for donating back his demo artist fee for March and for helping SWA promote Andy Evansen's workshop. Next time you see Laurin please give him a big thank you! Your board is working hard to put together programs you will enjoy but your input is always welcome. I can be reached at senichols@flash.net or 817-247-9091.

Happy Painting, Shirley Nichols

APRIL 2021

2021 INTERNATIONAL JURIED EXHIBITION

Juror: Andy Evansen

ENTRIES CLOSED

495 paintings from 200 artists

April 16 - Notification of Acceptance
(via e-mail)

April 17 - Paintings to be posted online

April 19 - Juror Demo

April 20-22 - Juror Workshop

May 2 - Announcement of Juror's Awards

April 18th - May 30th, 2021
Online Exhibit



FALL MEMBERSHIP SHOW

Juror Announced

We are excited to announce that Mollie Jones will be the juror for the Fall Membership Show. More info to come soon!

www.swawatercolor.com



Follow Us

Member News

Trish Poupard



Approaching Fort Worth

Accepted in the Texas & Neighbors 36th Regional Art Exhibition which will hang from May 15 through June 16 at the Irving Arts Center.

Tom Brown

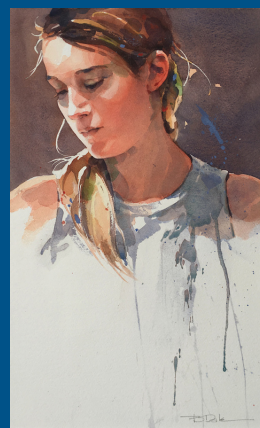


I have the privilege of belonging to a group of plein air artists that travel annually to Big Bend National Park. We call ourselves, "The Rattlesnake Gang." This April 10th we are having a reception at The Art Gallery Prudencia, in San Antonio. There will be over 40 paintings on display depicting the wonders of Big Bend. The show will be hanging until May 15th. I personally have 5 paintings in the show, one is on this postcard attached.

Bill Dale

Bill Dale's painting "Kimee" was accepted into the Louisiana Watercolor Society 51st International Exhibition opening May 1, 2021. Juror Thomas Schaller

His painting "Deanna" was accepted into the 2021 60th Watercolor USA Exhibition at the Springfield Art Museum.



Jai Kim

2 of 4 paintings which were exhibited from 2019-2020



Darla Bostick

Henri's Yellow Tulips

Accepted in the Texas and Neighbors Exhibition



Paintings of the Month

March Winners



Jan Riggins

Can You Hear Me?



Hugh Heaton

Boats



NEW MEMBERS

Telagio Baptista - Omaha, NE
Julia Bryson - Santa Monica, CA
Kate Burroughs - Sebastopol, CA
Oral Carper - Spokane, WA
Luanne Dominix - Bay Roberts, Newfoundland, Canada
Sandy England - Yerrington, NV
Nancy Falciani - Folly Beach, SC
Li Feng - Qingdao, China
June Finnegan - Tallahassee, FL
Eric Fisher - Lakewood, CO
Jacqueline Frey - Bloomington, IN
Jai Kim - Laguna Hills, CA
Michele Tabor Kimbrough - Marianna, FL
Sahyly Martinez - El Paso, TX
Colleen Petosa - Ft Worth, TX
Mary Pratt - Boerne, TX
Janet Ryder - Stuart, FL
Gregory Supple - Wappingers Falls, NY
Janice A Szczyglinski - Newark, NJ
Geeta Taneja - Cupertino
Katie Turner - Liverpool, NY

RETURNING MEMBERS

Peggy Brady - Arlington, TX
Kim Eisner - Arroyo Seco, NM
Randa Jordan - Fort Worth, TX
Karen Lindeman - Houston, TX
Leslie McDonald Jr. - Houston, TX
Gina Moore - Arlington, TX
Vickie Pier - Colleyville, TX
Pam Wilson - McKinney, TX

2021 CALENDAR

Our normal meeting space at the UNT Health Science Center in Fort Worth is currently closed to group meetings. When we're able to resume our monthly meetings, we will notify our membership!

April 19th - Andy Evansen Demo
Juror of International Exhibition

April 21st -23rd - Andy Evansen
Online Workshop

May 17th - Tina Bohlman Demo
Plein Air Landscapes

Sept. 20th - Kay Cross Demo
Large Scale Florals

October 18th - Mollie Jones
Demo and workshop
Still Life

Nov. 18th - Brenda Diggers Demo

Please note that all meeting demos, workshops and events are subject to change due to COVID-19 restrictions. Please watch for email updates or future newsletters for any calendar changes that may occur.

Board of Directors

PRESIDENT

Darla Bostick

PRESIDENT ELECT

Iok Hou Pang

SECRETARY

Lu Koenig

EXHIBITION

Charlie Nieman

EDUCATION/WORKSHOP

Shirley Nichols

Bill Dale

TREASURER

Pat Bonell

MEMBERSHIP

Janet Southern

COMMUNICATIONS

Skeeter Murley

If you have any news you would like to share in future newsletters, please let us know!

swa.membernews@gmail.com

SWA memberships runs on a calendar year January through December

You can join SWA anytime during the year. Our official membership campaign begins in October as our regular year runs with the calendar: January through December. Those who join mid-year do not receive a discounted membership fee, but they are eligible for the membership juried show in the fall, which is for the current members only. We will not be meeting during the summer months and will resume in September.

We like new members...invite your friends!

SWA Membership includes these benefits:



- ✚ Fellowship with like-minded creative folks
- ✚ Post your artwork on our Facebook page
<http://www.facebook.com/SWAwatercolor>
- ✚ Free monthly SWA newsletter
- ✚ Entry discount for any SWA show
- ✚ Free image on the SWA Members Gallery
- ✚ Annual Juried Membership Exhibition
- ✚ Buy space on the SWA Premium Gallery for \$20
- ✚ Annual Juried International Exhibition
- ✚ While maintaining SWA membership earn SWA Signature Membership after selection to 5 juried exhibitions our juried exhibitions (without disqualification)
- ✚ Asel Art Supply 20% discount
- ✚ Fun competitions
- ✚ December Holiday Party and painting swap
- ✚ ASEL Art of the Month Contest

Our Monthly meetings are held at the UNT Health Science Center building in Fort Worth. After you turn from Camp Bowie to Clinton St turn left into a sloping parking lot beyond the vacant kiosk. We are on the bottom floor of the building to the right corner. Watch for a sign on the parking lot with directions to our room (or check the map on the website)

5:45pm SWA Board Meeting
6:00pm Artwork Critique (bring in 1 or 2 works for some friendly advice)
7:00pm Member meeting begins after a few brief business notices

EDUCATION COMMITTEE

CHAIR: Shirley Nichols
ASEL Painting of the Month/Year: **AVAILABLE**
Monthly Critique: **AVAILABLE**
Programs: Shirley Nichols
Programs/Assistant to Demo Artist: **AVAILABLE**
Social Chairman (Refreshments/Receptions): **AVAILABLE**
Workshop Chair: Shirley Nichols

EXHIBITION COMMITTEE

CHAIR: Charlie Nieman
Hanging Volunteers: **AVAILABLE**
Membership for Exhibitions: Rhonda Barefield
SWA Signatures: Veronica Ritchey
Prize Sponsors: **AVAILABLE**
President's Volunteer Exhibition: Darla Bostick

MEETING VOLUNTEERS (Not a committee)

Hospitality: **AVAILABLE**

PUBLICITY & COMMUNICATION COMMITTEE

CHAIR: Skeeter Murley
Newsletter Editor: Jan Riggins
Photography: Veronica Ritchey
Print Editor for Catalogs: Skeeter Murley
Publicity: **AVAILABLE**
Website Manager: Skeeter Murley
Facebook & Twitter: Skeeter Murley



FINANCE AND MARKETING COMMITTEE

CHAIR and Director of Finance & Budget: Pat Banell
Professional Standards (yearly audit): Jane Barrett

MEMBERSHIP COMMITTEE

CHAIR and Director of Membership: Janet Southern
Greeters: **AVAILABLE**
Editor of online Membership Directory: Skeeter Murley
House & Properties: Shirley Nichols

We hope you'll consider signing up for these, to help our association.



Kroger makes quarterly donations to SWA through your shopping! Go to www.krogercommunityrewards.com. If you already have a Kroger's Plus card, create your account and input your card number. In 7 to 10 days after shopping you will notice at the bottom of your receipt a donation was recorded for SWA.



Amazon Smile donates .05% of your online purchase back to SWA. Choose Society of Watercolor Artists as your nonprofit organization.

Ongoing SWA Fundraisers (They help you to help us!)

SWA
P.O. Box 471571
Fort Worth, TX 76147
www.swawatercolor.com